



ERCOT Grid Operations
Wind Integration Report : 12/14/2015

Current Daily Values:

Peak Load	38,823 MW
Peak Load Hour (HE)	8
Wind at Peak Load Hour	8,069 MW

Max Wind	12,941 MW
Max Wind Time	22:05
Penetration at Max Wind Time	37.36 %

Max Wind Penetration	38.40 %
Max Wind Penetration Time	23:43
Wind Generation at Max Wind Penetration Time	11,731 MW

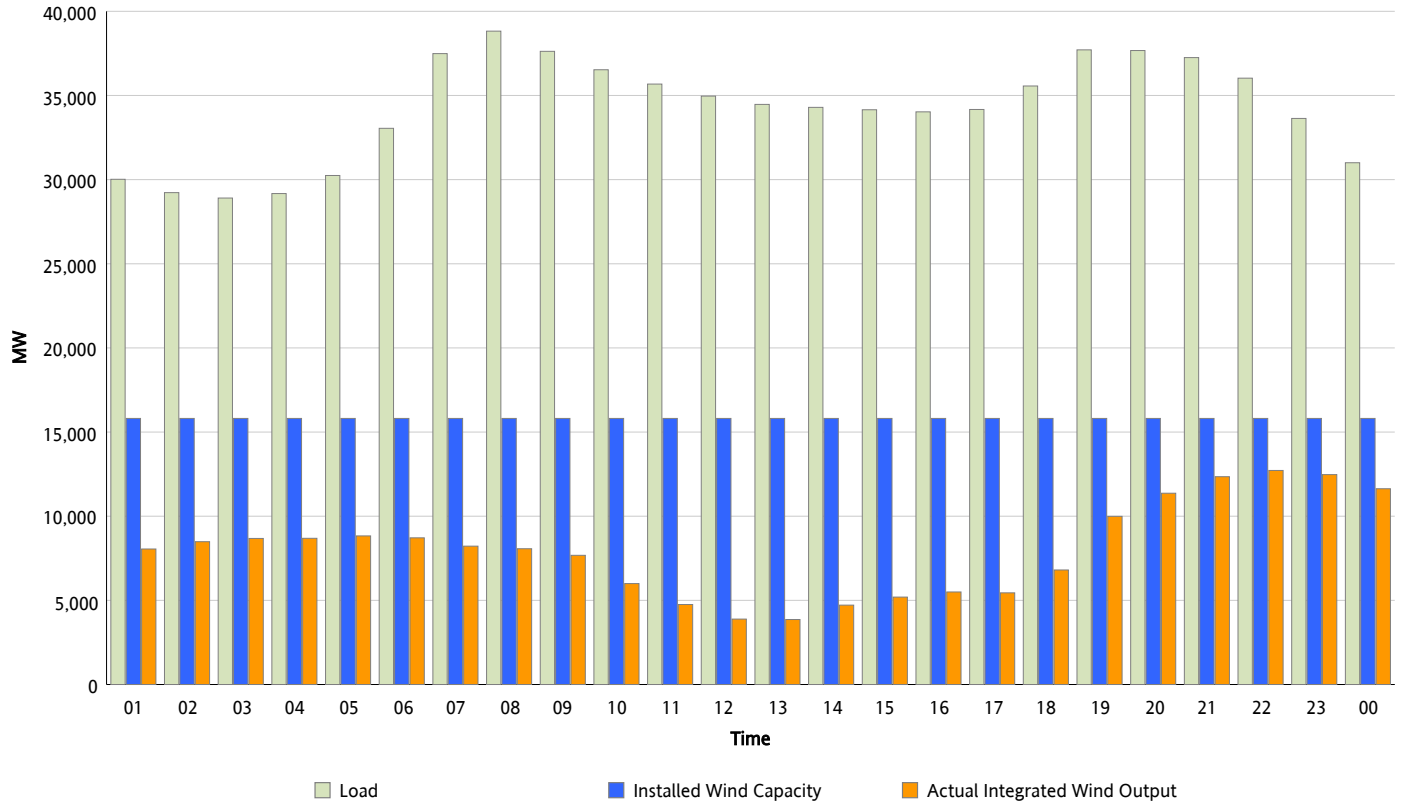
All Time Record Values:

Record Wind Generation	12,971 MW
Record Wind Generation Time	11/25/2015 21:10
Penetration at Record Wind Generation Time	36.86 %

Record Wind Penetration	43.55 %
Record Wind Penetration Time	11/26/2015 02:36
Wind Generation at Record Wind Penetration	11,649 MW

Hourly Average Actual Load vs. Actual Wind Output

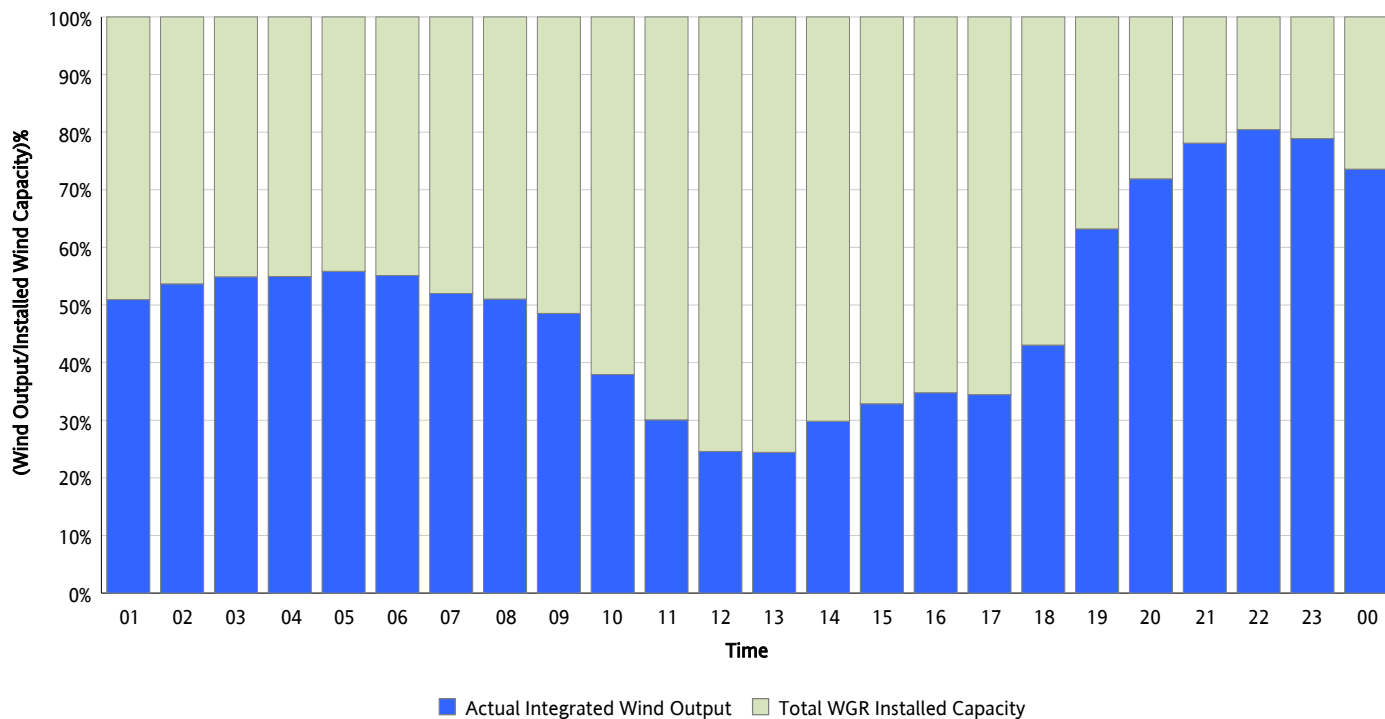
12/14/2015



** Wind Record and Wind Max represent instantaneous values and the rest of the values are integrated over the hour.
Capacity numbers used in the graphs are based on the expected commercial operation date of each Wind Generation Resource.*

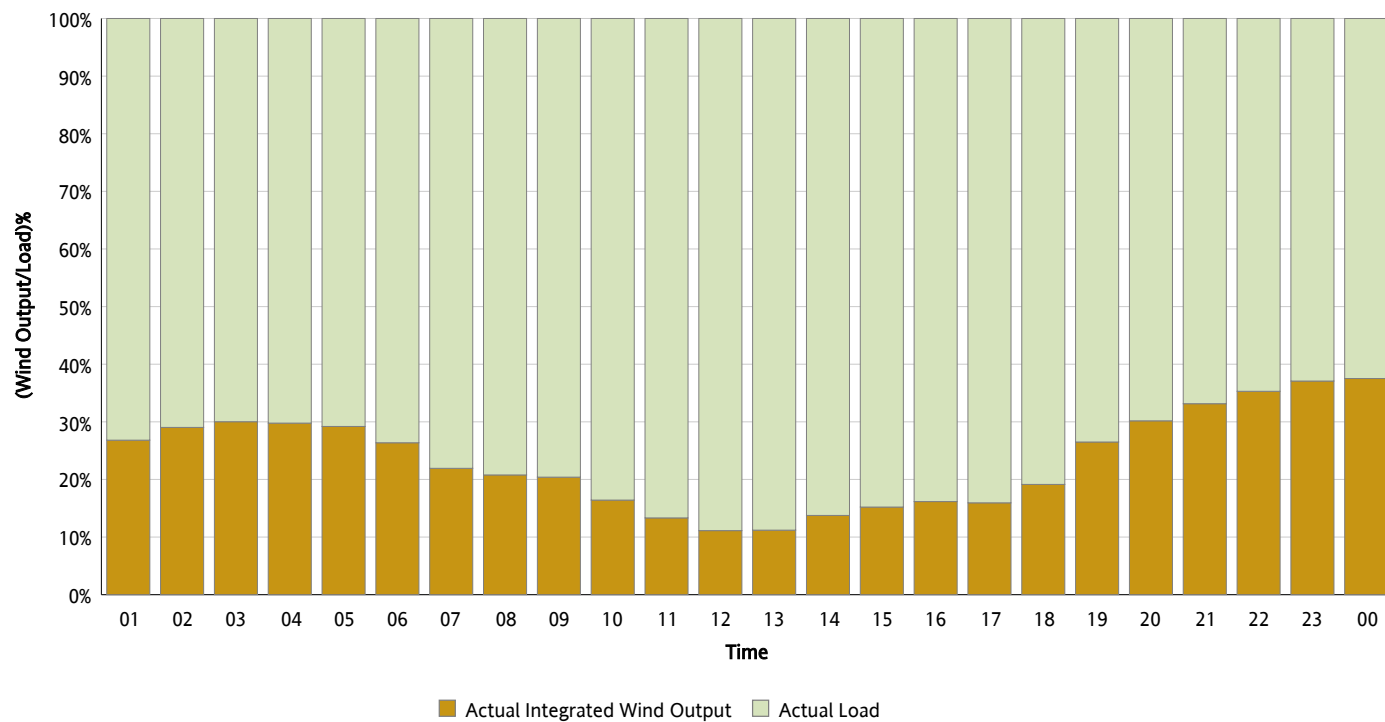
Actual Wind Output as a Percentage of the Total Installed Wind Capacity

12/14/2015



Actual Wind Output as a Percentage of the ERCOT Load

12/14/2015



ERCOT Load vs. Actual Wind Output

12/07/2015 - 12/14/2015

